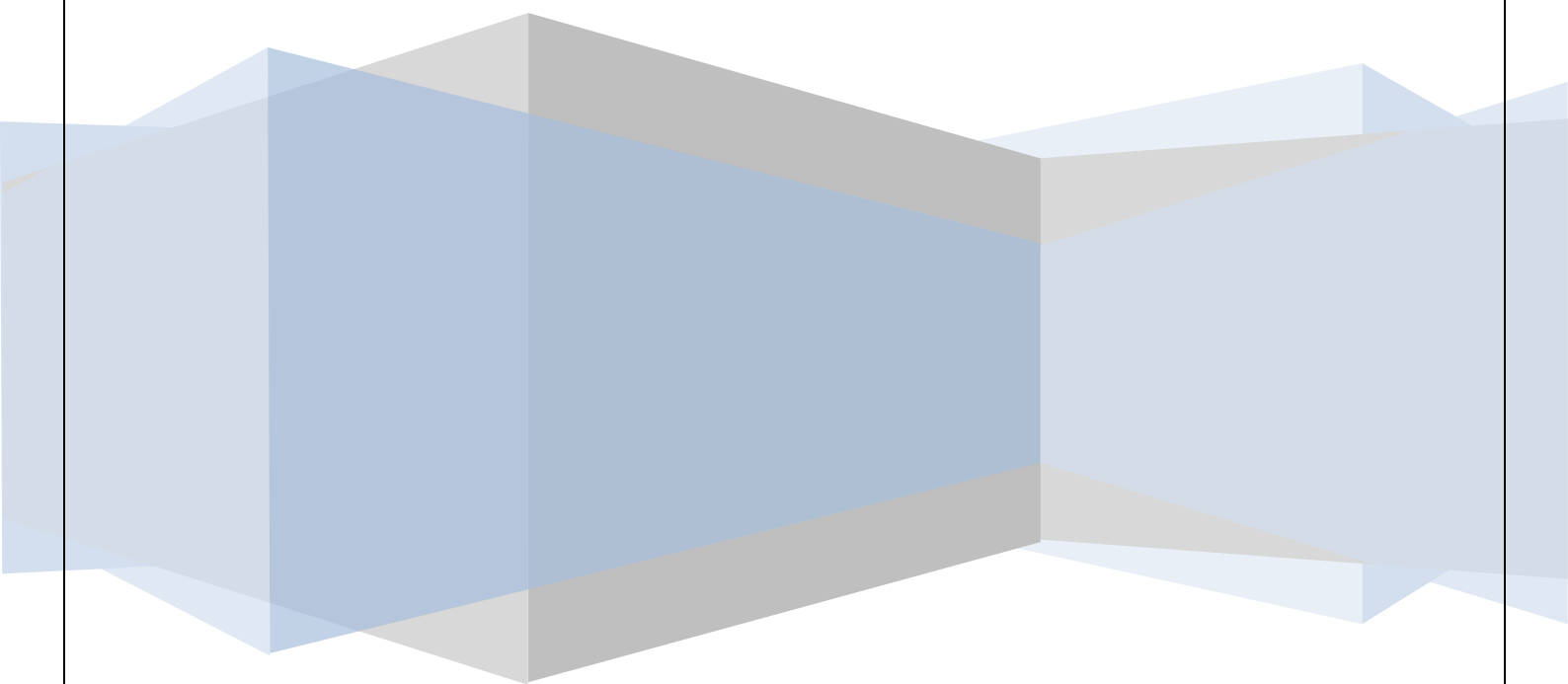


# **Integrated Child Development Services (ICDS) Scheme**

**Jharkhand**



## **Integrated Child Development Services (ICDS) Scheme**

The scheme was implemented in Jharkhand on 15 November 2005. For the record, ICDS was first implemented in 1975 from Khuntpani Block of West Singhbhum District in the erstwhile Bihar.

This developmental programme has a crucial role in preventing child labour. Anganwadi centres in the villages promote protection of a child from neglect and abuse by ensuring access to nutrition and education.

It also generates awareness in the community, particularly among parents, on the usefulness of sending a child to school. This has an impact not only in accelerating the school enrolment but also prevents the child from entering the labour force.

Following are highlights of the Convergence initiative in the state:

- Listed children under 6 years of age enrolled in anganwadi centres in the nearest vicinity
- Pre-school kits provided to the centres
- Sensitisation of anganwadi workers on the issue of child labour
- Provision of toys

### **About ICDS**

This outreach programme helps achieve:

- ✚ Major nutritional and health goals
- ✚ The national goal of universal primary education
- ✚ Increased opportunities for promoting early development
- ✚ The goal of releasing girls from the burden of sibling care and facilitating their participation in primary education

Launched on 2 October 1975 by the Central Government, ICDS Scheme represents one of the world's largest and most unique programmes for early childhood development. ICDS is the foremost symbol of India's commitment to her children – India's response to the challenge of providing pre-school education on one hand and breaking the vicious cycle of malnutrition, morbidity, reduced learning capacity and mortality, on the other.

<http://wcd.nic.in/icds.htm>

### Objectives

- i. To improve the nutritional and health status of children in the age group of 0-6 years
- ii. To lay the foundation for proper psychological, physical and social development of the child
- iii. To reduce the incidence of mortality, morbidity, malnutrition and school dropout
- iv. To achieve effective coordination of policy and implementation amongst the various departments to promote child development
- v. To enhance the capability of the mother to look after the normal health and nutritional needs of the child through proper nutrition and health education

### Services

The above objectives are sought to be achieved through a package of services comprising:

#### Health

- Immunisation
- Health check-ups
- Referral services
- Treatment of minor illnesses

#### Nutrition

- Supplementary feeding
- Growth monitoring and promotion
- Nutrition and health education

### Early Child Hood Care and Pre School Education

- Management of malnutrition
- Treatment of diarrhoea, de-worming, distribution of simple medicines, etc.
- Supportive services such as providing access to safe drinking water, environmental sanitation, women's empowerment programmes, non-formal education and adult literacy
- Providing and ensuring at the anganwadi centres a natural, joyful and stimulating environment, with emphasis on necessary inputs for optimal growth and development

(Details: <http://wcd.nic.in/icds.htm>)

### Beneficiaries

Since BPL is no longer a criteria under ICDS, states have to ensure registration of all eligible beneficiaries (as per letter no. F.No. 4-2/2008-cd dated 07.11.2008 of the Government of India)

- Children in 0-6 years age group
- Adolescent girls
- Pregnant women and lactating mothers

**Table 1:** Number of sanctioned and operational ICDS projects and anganwadi centres (AWCs) and number of beneficiaries (children 6 months-6 years and pregnant and lactating mothers (P&LM)) under ICDS Scheme as of March 2012

| No. of ICDS Projects |            | No. of Anganwadi Centres |            | Beneficiaries for Supplementary Nutrition |                      |                                   |                                       | Beneficiaries for Pre-School Education                    |                |                 |
|----------------------|------------|--------------------------|------------|---|----------------------|-----------------------------------|---------------------------------------|---|----------------|-----------------|
| Operational          | Functional | Sanctioned               | Functional | Children (6 months-3 years)               | Children (3-6 years) | Total Children (6 months-6 years) | Pregnant and Lactating Mothers (P&LM) | Total beneficiaries (Children 6 months-6 years plus P&LM) | Boys 3-6 years | Girls 3-6 years |
| 224                  | 204        | 38,296                   | 38,186     | 1,188,436                                 | 1,164,092            | 2,352,528                         | 612,874                               | 2,965,402   | 622,569        | 678,879         |

### Supplementary Nutrition Norms

*Financial norms:* The Government of India has recently revised the cost of supplementary nutrition for different categories of beneficiaries vide the Ministry of Women and Child Development letter No. F.No. 4-2/2008-CD.II dated 07.11.2008, the details of which are as under:

| Sl No. | Category                                     | Pre-Revised Rates | Revised Rates (per Beneficiary per Day) |
|--------|--|-------------------|---|
| 1.     | Children (6-72 months)                       | Rs 2.00           | Rs 4.00                                 |
| 2.     | Severely malnourished children (6-72 months) | Rs 2.70           | Rs 6.00                                 |
| 3.     | Pregnant women and nursing mothers           | Rs 2.30           | Rs 5.00                                 |

The Government of Jharkhand notified financial norms on 24.12.2009.

*Nutritional Norms:* Revised vide letter No. 5-9/2005-ND-Tech Vol. II dated 24.2.2009 of Government of India and notified on 24.12.2009 by the Government of Jharkhand.

| Sl No. | Category                                     | [Pre-Revised]    |             | [Revised]        |             |
|--------|--|------------------|-------------|------------------|-------------|
|        |  | Calories (K Cal) | Protein (g) | Calories (K Cal) | Protein (g) |
| 1.     | Children (6-72 months)                       | 300              | 8-10        | 500              | 12-15       |
| 2.     | Severely malnourished children (6-72 months) | 600              | 20          | 800              | 20-25       |
| 3.     | Pregnant women and nursing mothers           | 500              | 15-20       | 600              | 18-20       |

*Type of Supplementary Nutrition:*

Children in the age group 0-6 months: For children in this age group, states/UTs may ensure continuation of current guidelines for early initiation (within one hour of birth) and exclusive breastfeeding for children for the first 6 months of life.

Children in the age group 6 months to 3 years: For children in this age group, the existing pattern of take home ration (THR) under the ICDS Scheme will continue. However, in addition to the current mixed practice of giving either dry or raw ration (wheat and rice), which is often consumed by the entire family and not the child alone, THR should be given in the form that is palatable to the child instead of the entire family.

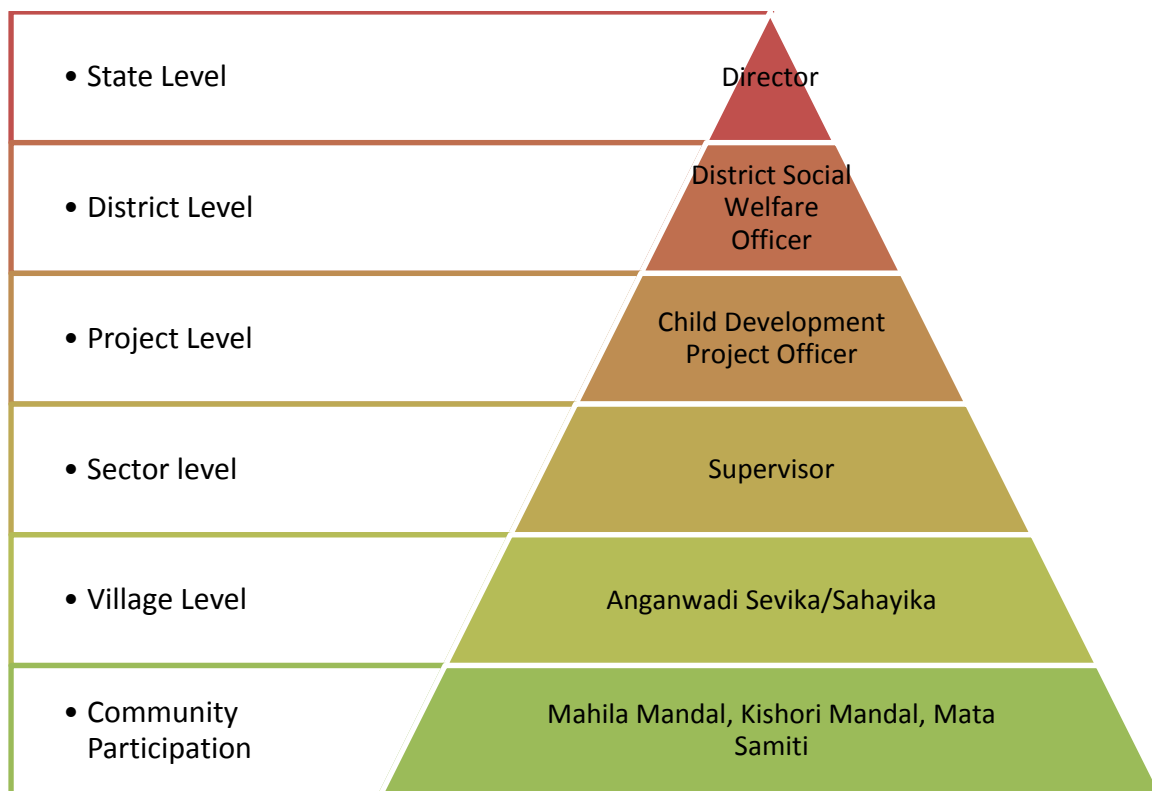
Children in the age group 3 to 6 years: For the children in this age group, states/UTs have been requested to make arrangements to serve hot cooked meal in anganwadi centres and mini-AWCs under the ICDS Scheme. Since the child in this age group is not capable of consuming a meal of 500 calories in one sitting, the states/UTs are advised to consider serving more than one meal to the children who come to anganwadi centres. Since the process of cooking and serving hot cooked meal takes time, and in most of the cases the food is served around noon, states/UTs may provide 500 calories over more than one meal. States/UTs may arrange to provide a morning snack in the form of milk/banana/egg/seasonal fruits/micronutrient fortified food, etc.

(Details: <http://wcd.nic.in/icds.htm>)

### Functionaries

The scheme in Jharkhand is run by the Department of Social Welfare, Women and Child Development.

### Functional Organogram of the ICDS Project in Jharkhand



In the state of Jharkhand, the ICDS Scheme is run through a network of 32,343 anganwadi centres, each centre being manned by a Sevika and a Sahayika each.

At the block and district levels, the departmental functionaries in charge are child development project officers and district programme officers/district social welfare officers, respectively.

The work of supervision and monitoring of the ICDS Scheme at the state level is done by the Directorate of Social Welfare functioning from the state capital. The Directorate, in turn, is responsible to the Department of Social Welfare.

### Contacts

| Sl No. | Name of District | Name of DSWO                    | Contact Number |
|--------|------------------|---------------------------------|----------------|
| 1      | Bokaro           | Shri Nagendra Nath Roy          | 9470197615     |
| 2.     | Chatra           |                                 | 8987611743     |
| 3.     | Deoghar          | Shri Uma Shankar Rawat          | 89868660999    |
| 4      | Dhanbad          | Shri Bandu Pernandis            | 9471572359     |
| 5      | Dumak            | Shri Sukumar Modak              | 9431147146     |
| 6.     | East Singhbhum   | Shri Birendra Kumar Singh       | 9431381163     |
| 7      | Garhwa           | Shri Jagat Kishore Prasad (DWO) | 9431129605     |
| 8      | Giridih          | Shri Isamal Haque               | 8084380015     |
| 9      | Godda            |                                 | 9546696153     |
| 11     | Gumla            | Smt. N.S.Kuntia                 | 9431274396     |
| 12     | Hazaribagh       | Shri D.N. Singh                 | 9431384474     |
| 13     | Jamtara          | Shri Amol Singh (I.C)           | 9431190131     |
| 14     | Koderama         | Shri Shri Ajit Niral Sanga      | 9470978368     |
| 15     | Khunti           | Smt. Aradhna (I.C)              | 9431771012     |
| 16     | Latehar          | Shri Vinod Kumar Jaisawal       | 9471197191     |
| 17     | Lohardaga        | Shri N.N. Verma                 | 9431959326     |
| 18     | Pakuuraman       | Shri Churaman Ram               | 9430357757     |
| 19     | Palamu           | Shri J.K. Mishra                | 9431364899     |
| 20     | Ramgarh          | Shri Miss Madhumita Kumari      | 9470307879     |
| 21     | Ranchi           | Shri Lal Singh Kuril            | 9934165195     |



ICDS

|    |            |                                    |            |
|----|------------|------------------------------------|------------|
| 22 | Sahebganj  | Shri Kumar Mithlesh (Meso Officer) | 9939824608 |
| 23 | Simdega    | Shri Lalit Mohan Singh             | 9431147203 |
| 24 | Saraikeela | Shri Sanjay Thakur                 | 8986682572 |

(Details: <http://india.gov.in/govt/viewscheme.php?schemeid=1350>)

State-related details:

<http://jharkhand.gov.in/DEPTDOCUPLOAD/uploads/67/D200867011.pdf> (-1 MB) (PDF file that opens in a new window) 